

*** IMPORTANT INFORMATION ***

BEFORE YOU START

Installation should be performed by a competent person only. This product could be dangerous if incorrectly installed.

Check the pack to ensure all of the components are included.

When you are ready to start, make sure that you have all of the correct tools to hand, have plenty of space, and that the area for building is clean and dry.

Do not rush! Read these instructions first and run through the sequence before you begin. Assembly should be carried out in the steps shown in the following diagrams, constructing one unit at a time and keeping fittings together to avoid loss. Lay large panels on the floor using the packaging for protection. Do not overtighten screws, as this may damage the cabinet.

If any items are missing, or problems arise with fitting, please call the **Manufacturers' Helpline on 01769 575500**.

To clean - use mild soap and water only.

Do not use abrasive cleaners.

HARDWARE:

2 x **BC** LH Drawer Runner

2 x **BD** RH Drawer Runner

4 x **BG**

2 x **CD**

2 x **CE**

16 x **BE** Euro Screw

16 x **D** 15mm

2 x **BJ**

2 x **BK**

2 x **CF**

2 x **CG**

MINIMUM TOOLS REQUIRED:

CROSS HEAD SCREWDRIVER

DRILL & DRILL BITS (3mm & 5mm)

TAPE MEASURE

DRAWER BOX:

These items are pre-assembled

- 1 x ① LH drawer side
- 1 x ② RH drawer side
- 1 x ③ Metal Drawer Back
- 1 x ④ Drawer Base

There will be 2 drawer boxes in this pack

500mm DRAWERS

4 x **BM** 2 x **CH**

600mm DRAWERS

8 x **BM** 4 x **CH**

Please use scissors to open the bag of fittings and then empty the contents into a bowl, so that they do not get lost!

STEP 1:

Before fitting drawer runners to base end panels, check that you have a 'pair' of runners for right and left hand operation.

Pull top metal runner fully towards you to establish 'handing'. The highlighted hole positions must be used, as detailed in Fig 1, (RH panel shown).

Fix the RH runners **BD** to the RH End Panel using 4 x screws **BE**, and then repeat for the LH runners **BC** on the LH End Panel.

NOTE: The top pan drawer can be fitted in one of two positions, as shown, depending upon preference.

2 DRAWER CABINET

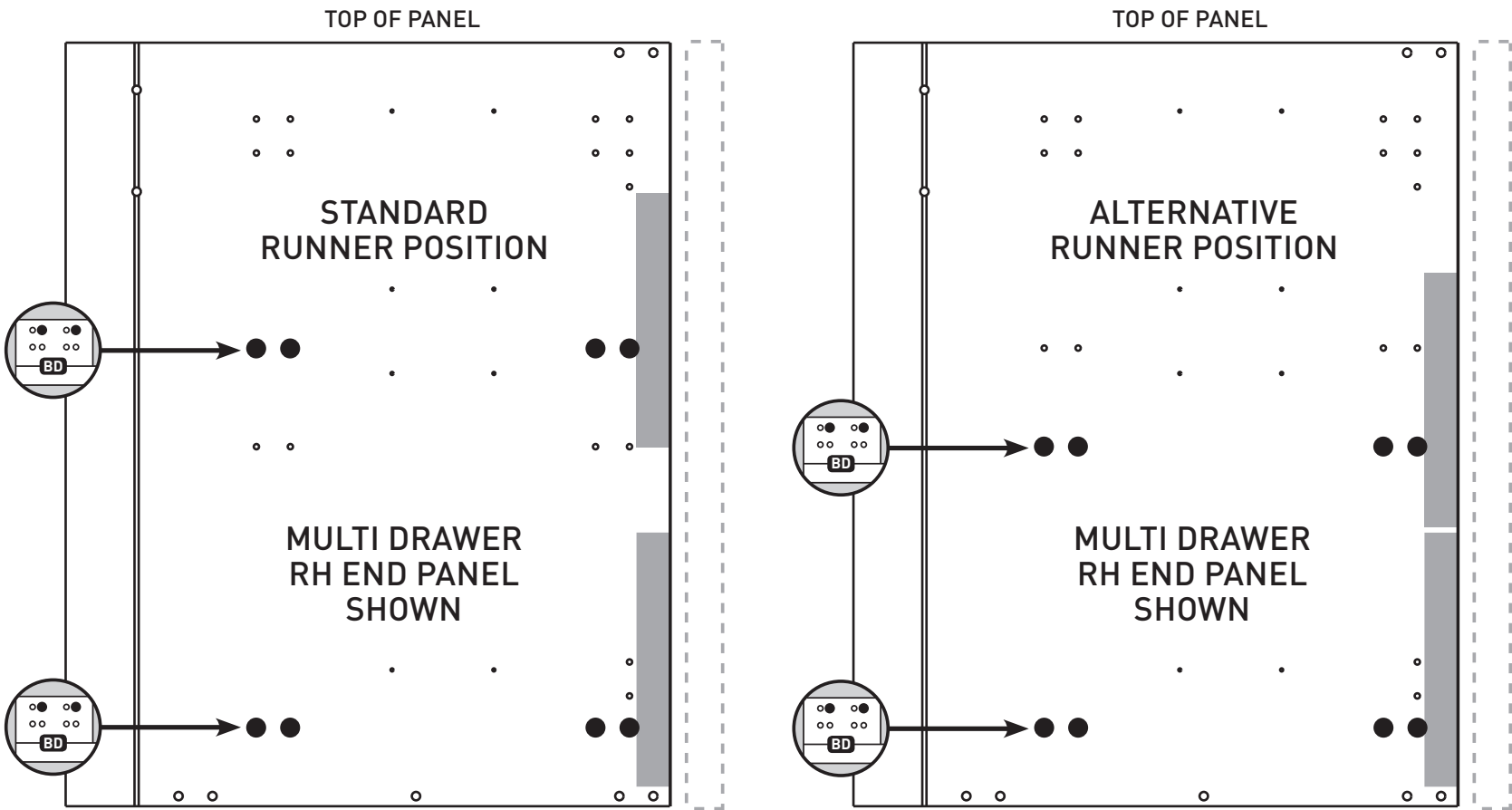
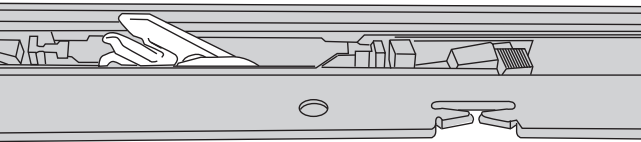


FIGURE. 1

STEP 2:

Turn drawer upside down and ensure both white plastic forks are set to the factory default position as shown below.

Reset the forks if they have moved to the opposite position (this will require firm pressure).



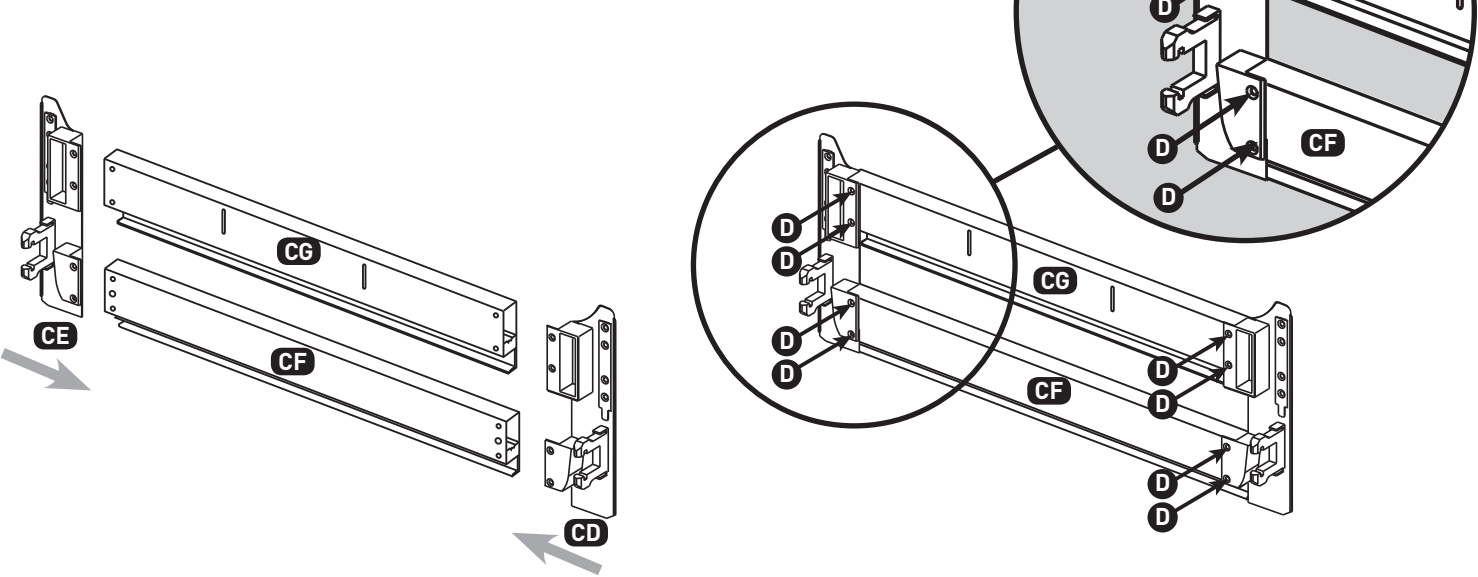
Turn the drawer the correct way up. Fully extend the drawer runners. Sit drawer sides on top of the extended drawer runners. Push drawer into cabinet until it 'clicks' into position.

NOTE: It will be necessary to remove the drawer to fix the components in **STEPS 6 & 7**, and then re-fit once complete. Pressure at the back of the runner may be required, in this instance, in order to 'click' the drawer into position.

STEP 3:

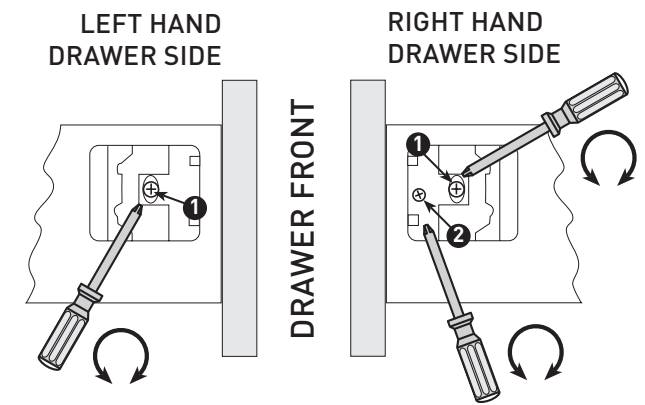
Identify the left and right hand front brackets **CD** and **CE**, and the metal drawer front section **CF** and **CG**. These components will need to be fitted together to create the complete drawer front.

Secure the two brackets from the back, using 8 x screws **D**.



STEP 4:

Push drawer front connectors into white plastic part of drawer box sides until it locks into position.



For **Vertical adjustment**, loosen screws **1** adjust Drawer front to desired position, re-tighten screws **1**.

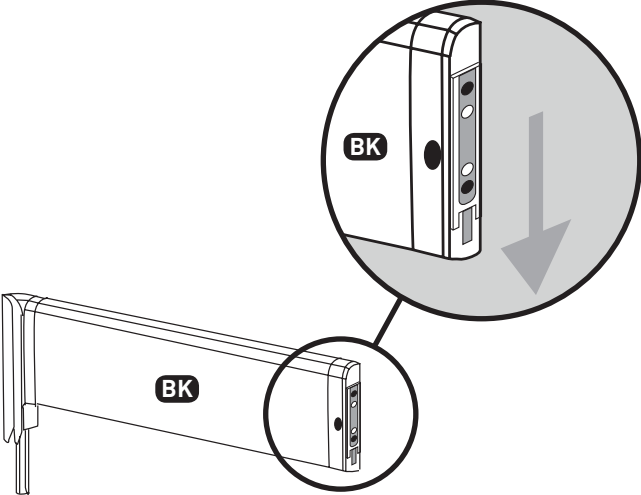
For **Horizontal adjustment**, turn screw **2** clockwise or anticlockwise for required positioning.

NOTE: Screw **2** is only present in the RH drawer side.

STEP 5:

Before attempting to fit parts **BJ** and **BK**, first locate and remove the plastic drawer front securing plates from the front ends, by holding the 'extending pull tab' and pulling downwards to withdraw.

These plates are not required, in this instance, and can be disposed of as necessary.



STEP 6:

Note: The fitting of parts **BJ**, **BK**, **BM** and **CH** should be completed only once the drawer front has been secured to the drawer sides.

With the drawer front secured, slide parts **BJ** and **BK** into position as shown in Fig 2, ensuring that they are secured to both the metal drawer back **3**, and the drawer front securing plates.

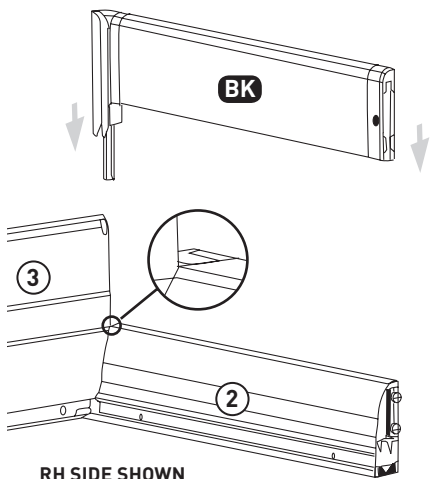


FIGURE 2.

STEP 7:

Identify centre divider **CH**. Ease locating lugs into metal back panel **3** and drawer front profile **CG**.

Push down to engage.

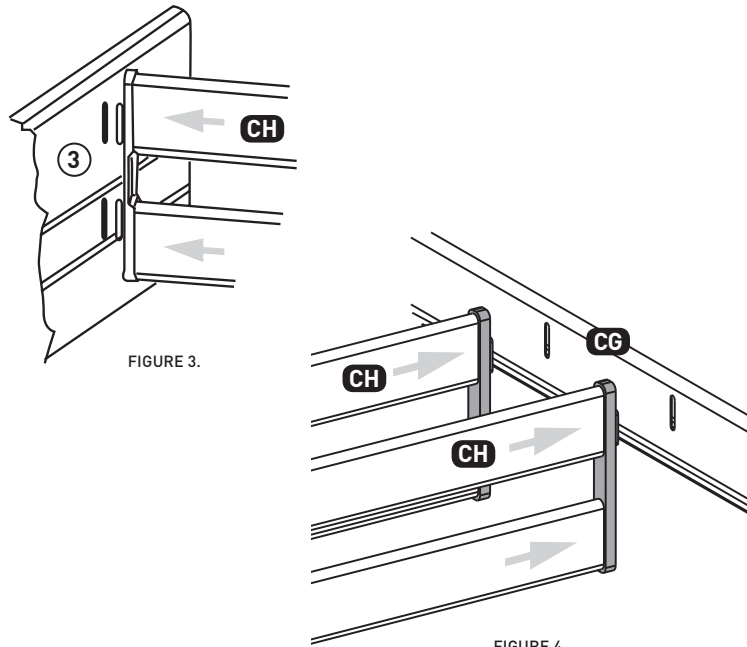


FIGURE 4.

Place adjustable divider **BM** to required position within drawer unit, and secure to centre divider by firmly pushing downwards to engage (see Fig.5)

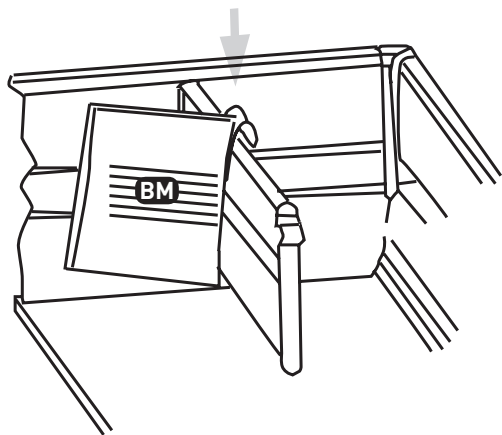
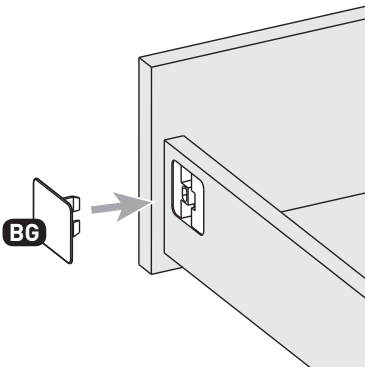


FIGURE 5.

STEP 8:

Once any adjustments have been made, the drawer front must be locked into place by fitting the locking plates **BG**, as shown.



STEP 9:

Fast assembly system for quick fixing or removal.

To remove drawers push up both black/grey tabs together (located underneath both sides of drawer near the front) while pulling out from carcass.

